



HANKOOK KORUS
PHARM.CO.,LTD



First in the World

GL Rapha



First
In the world
Beyond the Dream

We are GL RAPHA

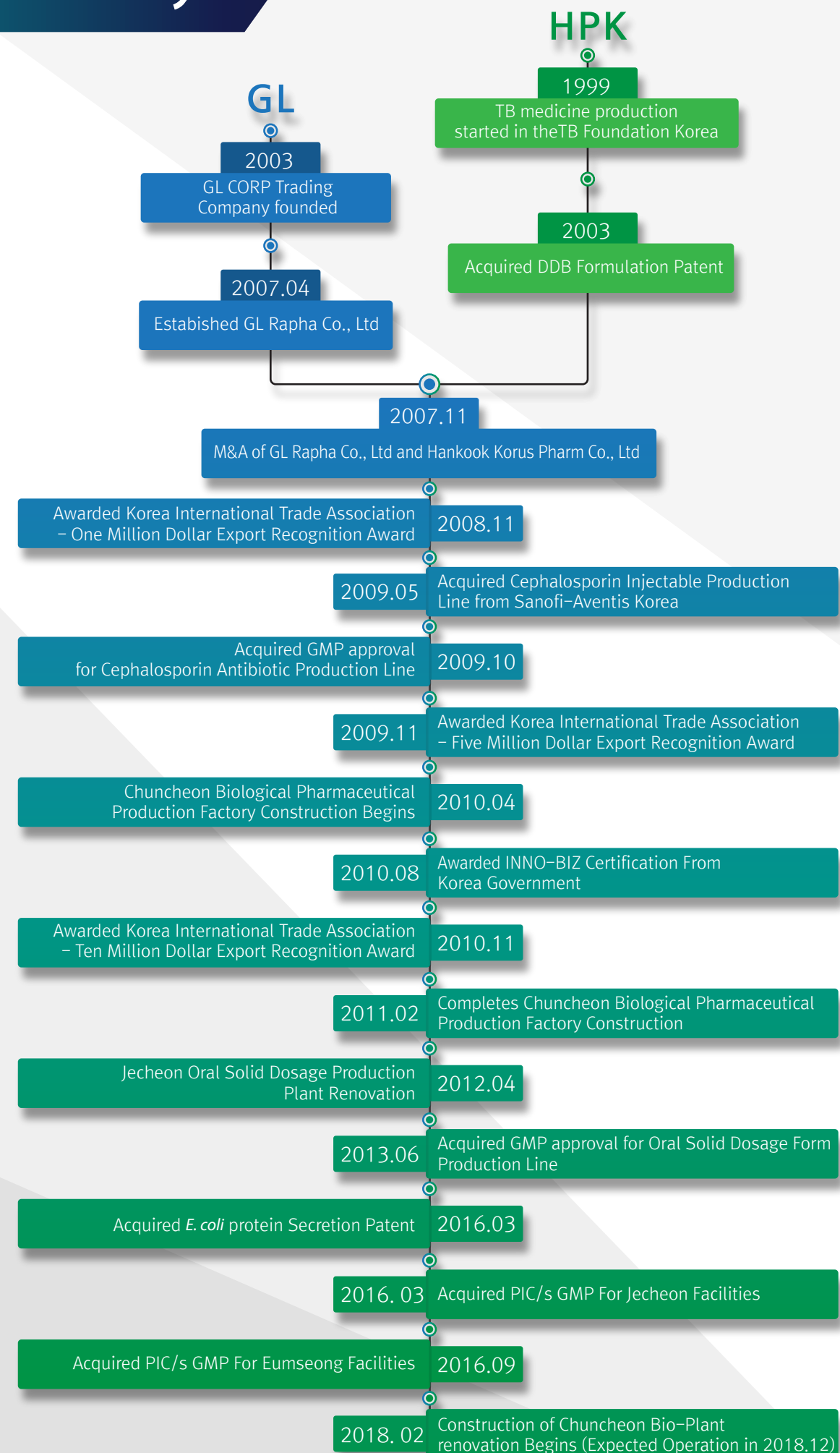
GL Rapha is a pharmaceutical company anchored in love, built on trust, and cultivated with action. GL has devoted itself to the health and quality of life for all people.

GL is committed to provide effective and affordable medicines to meet the health needs of the global community. Our subsidiary Hankook Korus Pharm produce high quality generic chemical and biological products at three manufacturing facilities. We are continually investing in the development of beneficial products and cost effective production methods. We are currently expanding our Bio-product production facility to meet the growing demand.

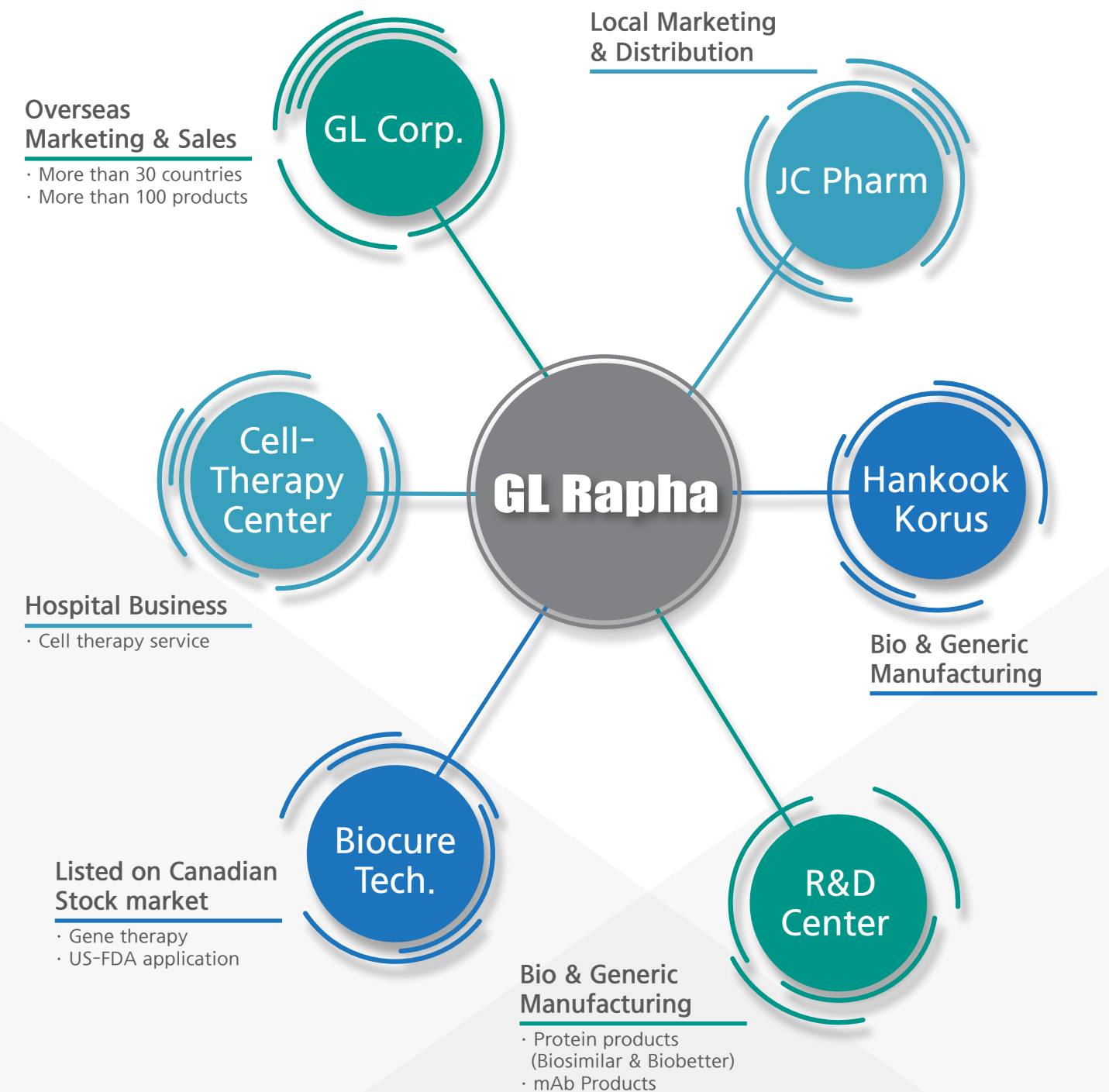
GL continues to develop innovative ways to reach the places of need. Beyond trade, we are striving to achieve mutual growth with our international partners through global-localization of our technology via synergistic collaborations and business ventures worldwide. We work with local companies and governments to facilitate localization of our manufacturing technology in our partners homeland making medicines more accessible to a wider global community.

Join us in this quest of health and quality of life for all people.

History



Organization



Manufacturing Sites

Seoul (Headquarter) R&D Center



Eumseong (Injectable Plant)

Location : 78, Daepungsandan-ro, Daeso-myeon,
Eumseong-gun, Chungcheongbuk-do, Korea

**Products : Powder injectables
of Cephalosporin antibiotic**

- Acquired from Sanofi-Aventis Korea in 2009
- PIC/s GMP approved for injectable
- Annual production capacity up to 10 million vials/year



Chuncheon (Bio-Plant)

Location : 11, Geodudanji 1-gil, Dongnae-myeon,
Chuncheon-si, Gangwon-do, Korea

**Products : Biopharmaceuticals
(EPO, hGH, PEG-IFN alpha-2b, G-CSF)**

- GMP approved for Bio Product
- Renovation to be Completed in 2018



Jecheon (OSD Plant)

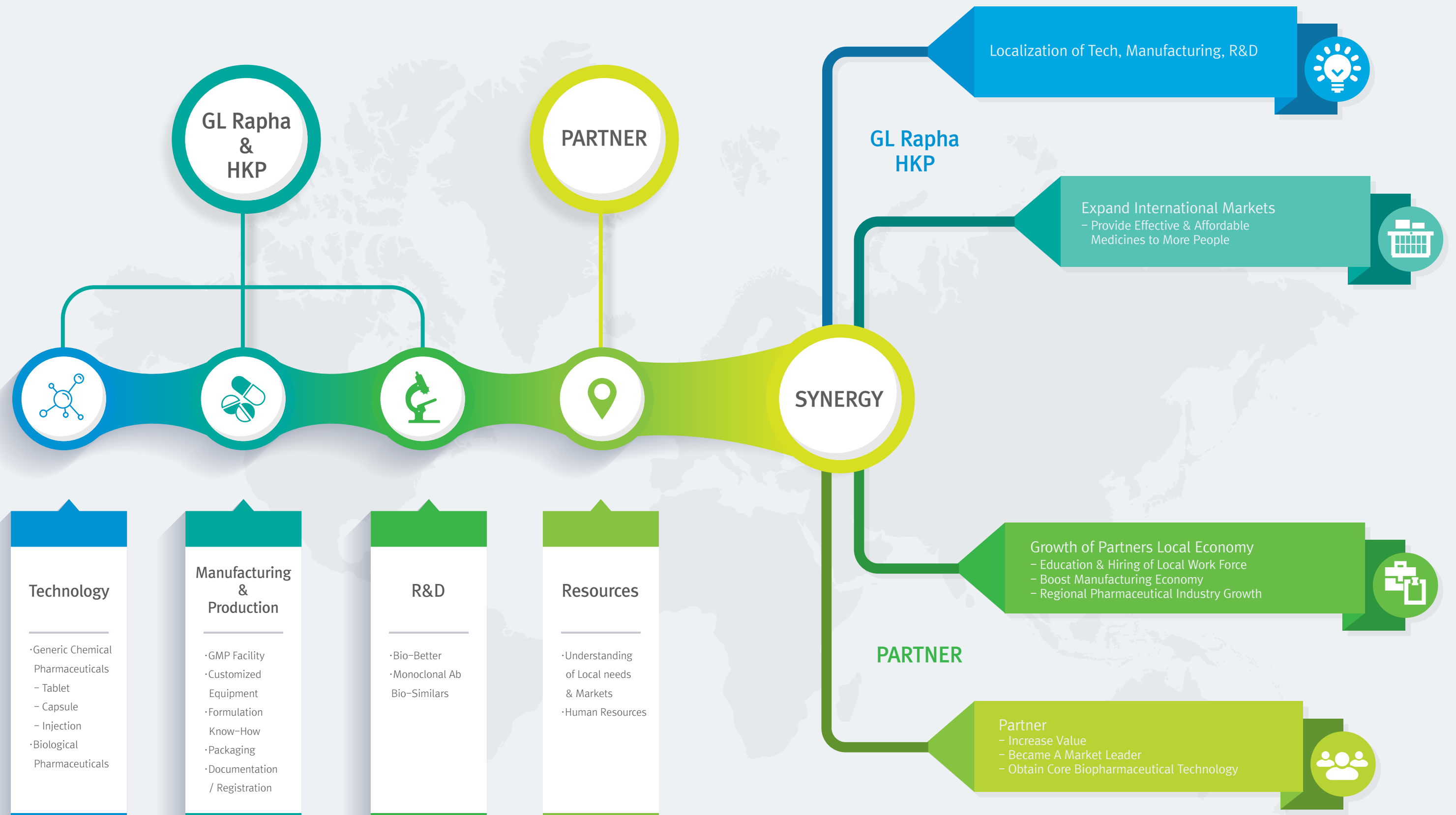
Location : 30, Gangjeo-ro, Jecheon-si, Chungcheongbuk-do, Korea

Products : About 120 generic drugs

- PIC/s GMP approved for Oral Dosage Form
- R&D center for developing chemical drugs
- / Separated manufacturing site for Cepha. antibiotics
- Annual production capacity up to 700 million tablets/year,
20 million antibiotics/year, 10 million capsules/year
- Expansion plan for Cephalosporin Injectable
products is under designing process

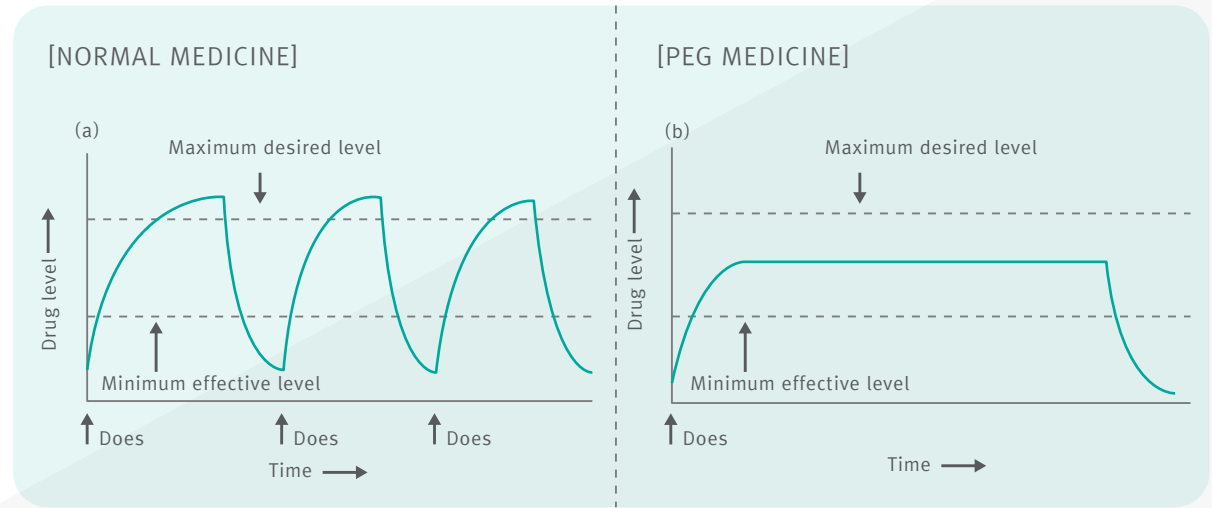
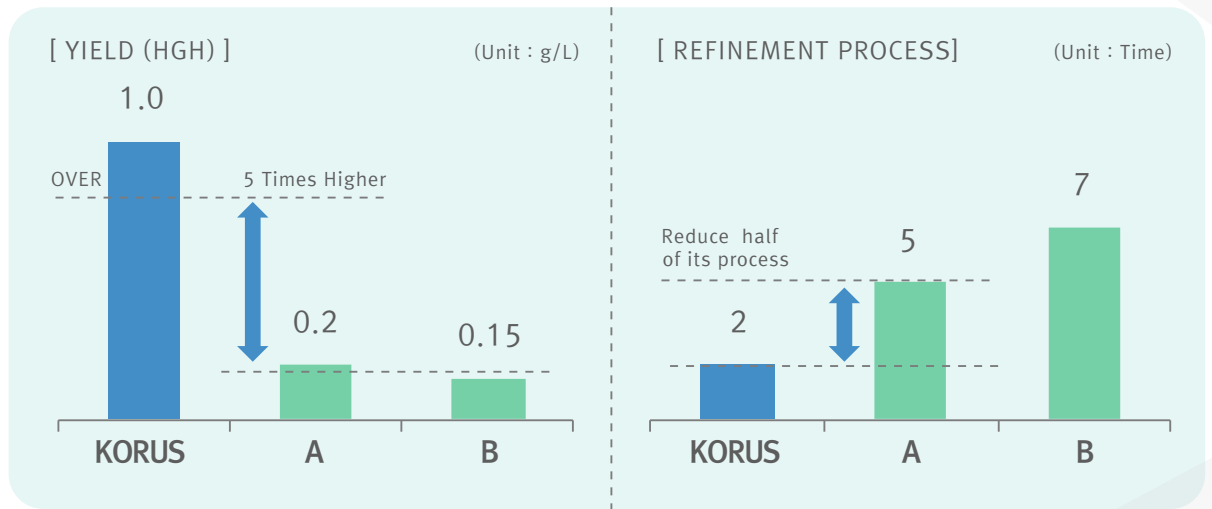


Project



Bio Pharmaceuticals

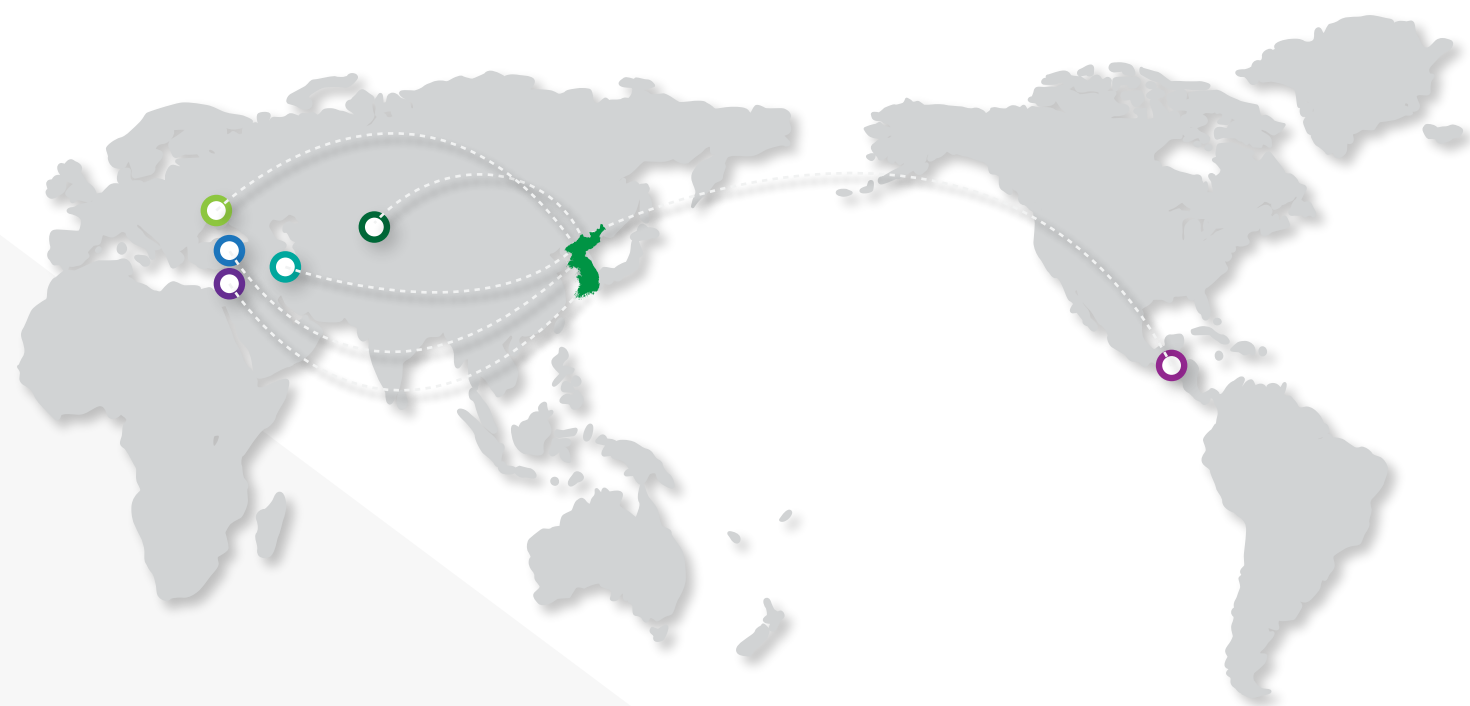
HEALivery® Platform Technology



Pipeline

		RESEARCH	CELL LINE	PROCESS DEVELOPMENT	PRECLINICAL	CLINICAL TRIAL	ON THE MARKET
BIO-SIMILAR	EPO						
	hGH						
	GCSF						
	Interferon-β						
BIO-BETTER	Peg. IFN-α						
	Peg. EPO						
	Peg. GCSF						
	Peg. IFN-β						
	Peg. hGH						
	Trastuzumab						
MONOCLONAL ANTIBODY [MAB]	Rituximab						
	Inflixmab						
	Bevacizumab						

Network



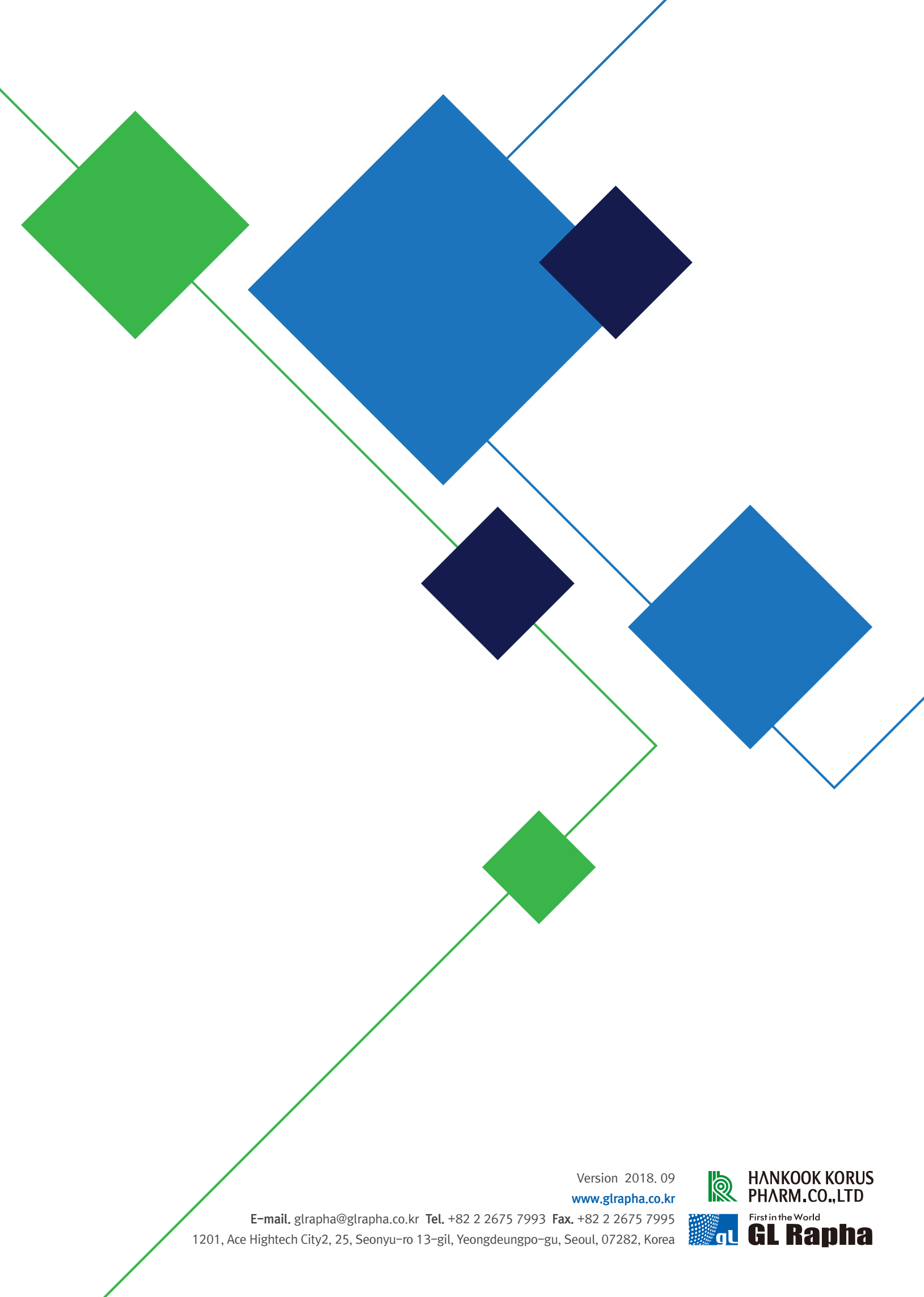
► Liaison Office

- 67562, Morskaya 50a, Kryzhanirkayl, Obssa City Ukraine
- 050057, Manas st. 83-1, Almaty, Kazakhstan
- Unit12-No3, Noor Avenue, Africa Blvd, Tehran/Iran
- Kardal Co No1, Incekmal, Ankra, Turkey
- Lazar 2 canter, plot No. 2722, Fectron No. 6, Bloc C Clst Floor 1, Rawda, Bauchrieh, Lebanon
- 10AV. 4- 07 zona15, Lode Contreras, Condomino Jardines de Dóna Victoria Case #24 Guatemala

Memo

This image shows a blank sheet of white paper with horizontal ruling lines. The lines are evenly spaced and extend across the width of the page. At the bottom of the page, there is a decorative element consisting of two overlapping light gray triangles pointing towards each other, creating a central diamond shape. The overall appearance is that of a clean, unused piece of stationery or a template for writing.

Memo



Version 2018.09

www.glrpha.co.kr

E-mail. glrpha@glrpha.co.kr Tel. +82 2 2675 7993 Fax. +82 2 2675 7995

1201, Ace Hightech City2, 25, Seonyu-ro 13-gil, Yeongdeungpo-gu, Seoul, 07282, Korea



HANKOOK KORUS
PHARM.CO.,LTD



First in the World

GL Rapha